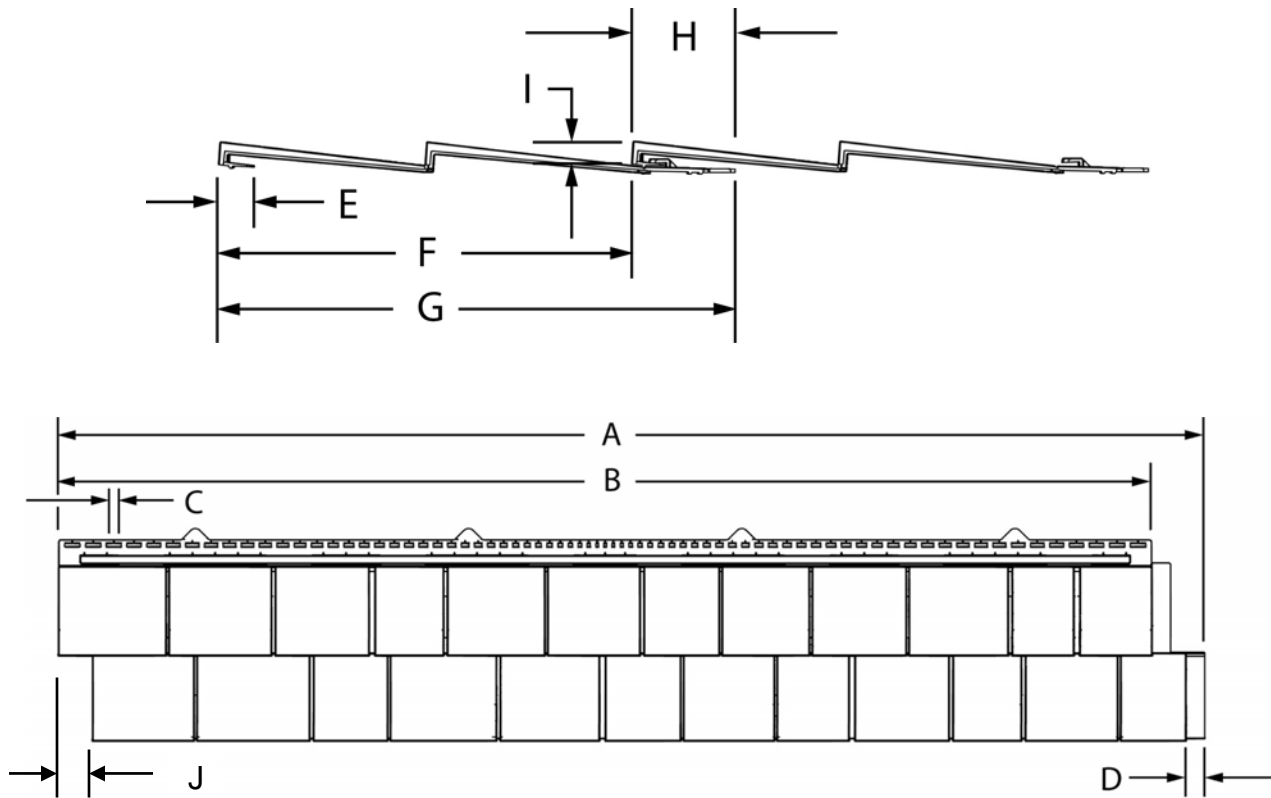
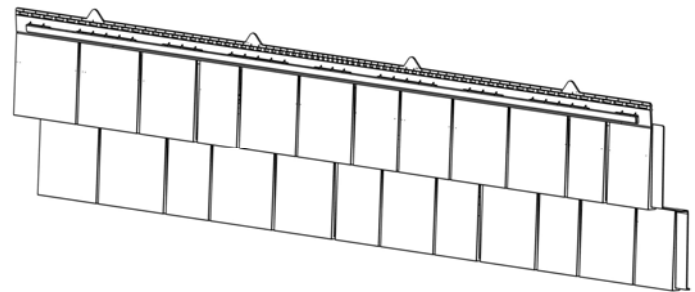


## CAPE COD SHAKE DETAILS



- A. Total Panel Length =  $67 \frac{3}{16}$ "
- B. Exposed Panel Length =  $64 \frac{1}{8}$ "
- C. Nail Slot Length = Variable
- D. Right Side Lock Length =  $1 \frac{1}{8}$ "
- E. Bottom Interlock Width =  $\frac{13}{16}$ "
- F. Exposed Panel Width = 10"  
(Interlocked)
- G. Total Panel Width =  $12 \frac{7}{16}$ "
- H. Width of Interlocks =  $2 \frac{7}{16}$ "  
(Bottom lock with Nail Hem)
- I. Butt Height =  $\frac{9}{16}$ "
- J. Second Course Offset = 2"



Double Course

Installed Panel Depth =  $\frac{3}{4}$ " J-Channel

Nominal Wall Thickness = 0.075"